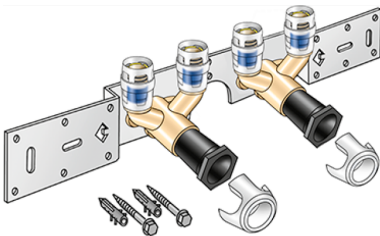


KELOX

KMP487 KELOX-PROTEC double U connection set 16/16x1/2" 15cm

73276B02

Areas of application



With KMP477 double U wall bracket fitting, sound-insulated, stopper, metal mount, plugs and fastening elements

DO NOT screw in any threaded pipes and cast iron fittings!

Approvals:



KE KELIT GmbH

A 4020 Linz, Ignaz-Mayer-Straße 17, Austria, Europe

PHONE +43 (0) 50 779 E-MAIL office@kekelit.com

www.kekelit.com

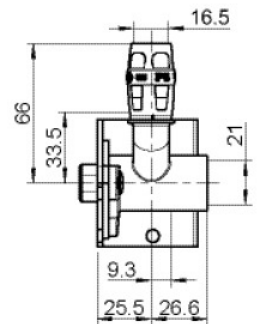
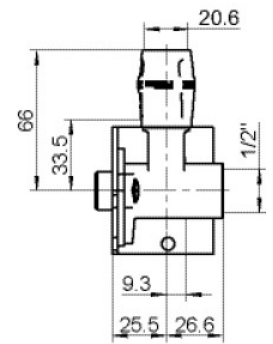
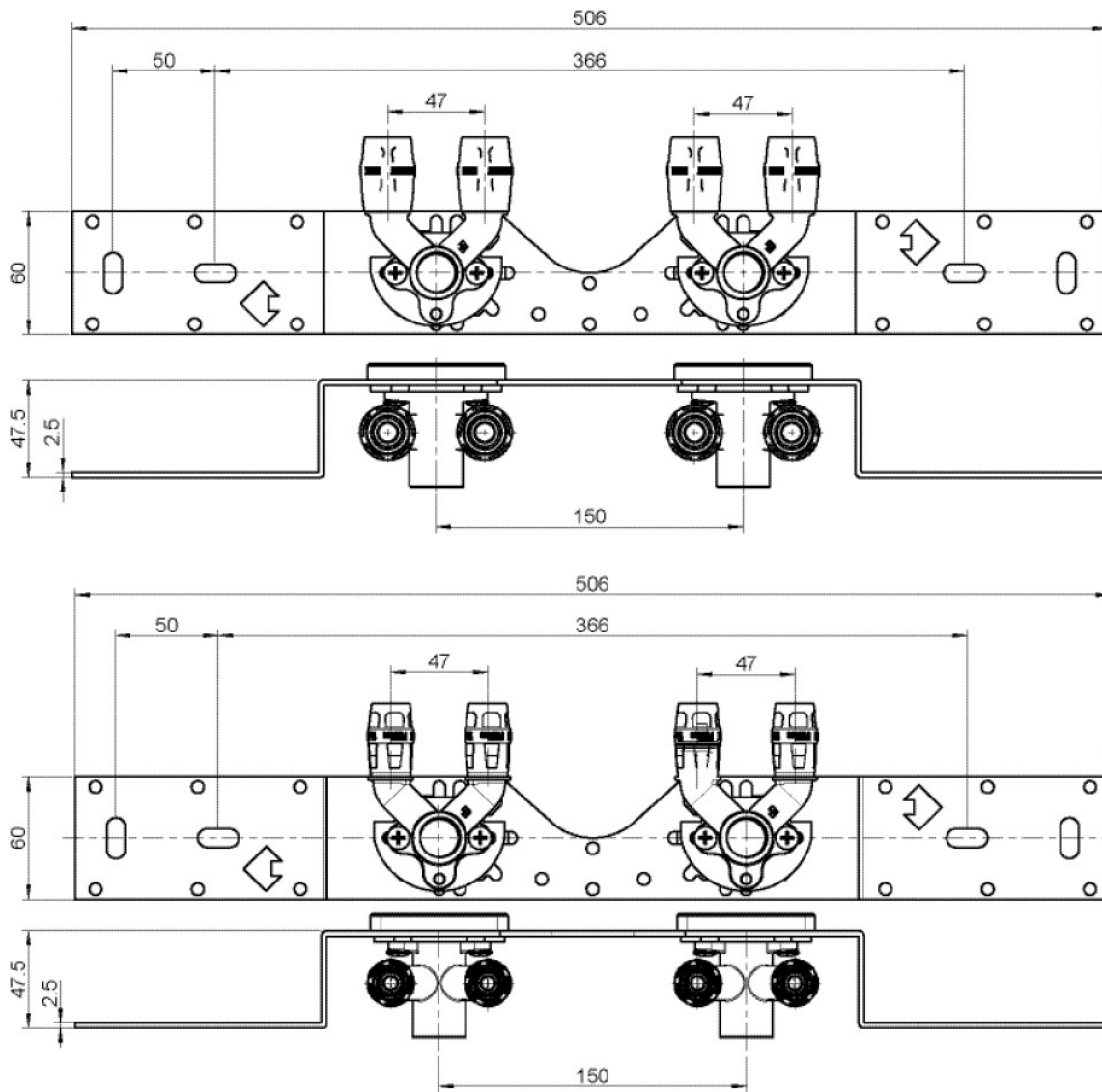
Specifications

Article information

port 1 Einsteck (Push-Fitting)

Product information

VPE1	1,00 KT1
VPE2	15,00 KT2
weight	1,171 KGM
text	KELOX-PROTEC double U connection set
INTRNR	74122000
main material group	KELOX
material group	KELOX-PROtec pushfittings
code	KMP487



Art. No	label
73276B02	16/16x1/2" 15cm