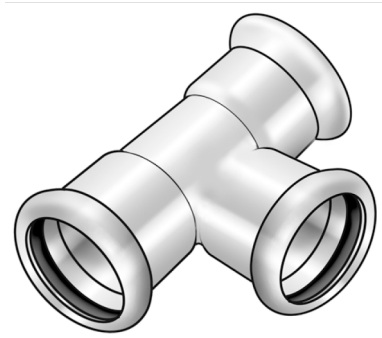


# STEEL FIX C-STAHl

CP440 C-Steel press-tee 89/22/89

54630KDK

## Areas of application



Press-fit tee equal or reduced made of carbon steel coated with a zinc layer, incl. EPDM sealing components, d15-54 "leak before pressed"

Press contour: M

# Specifications

## Article information

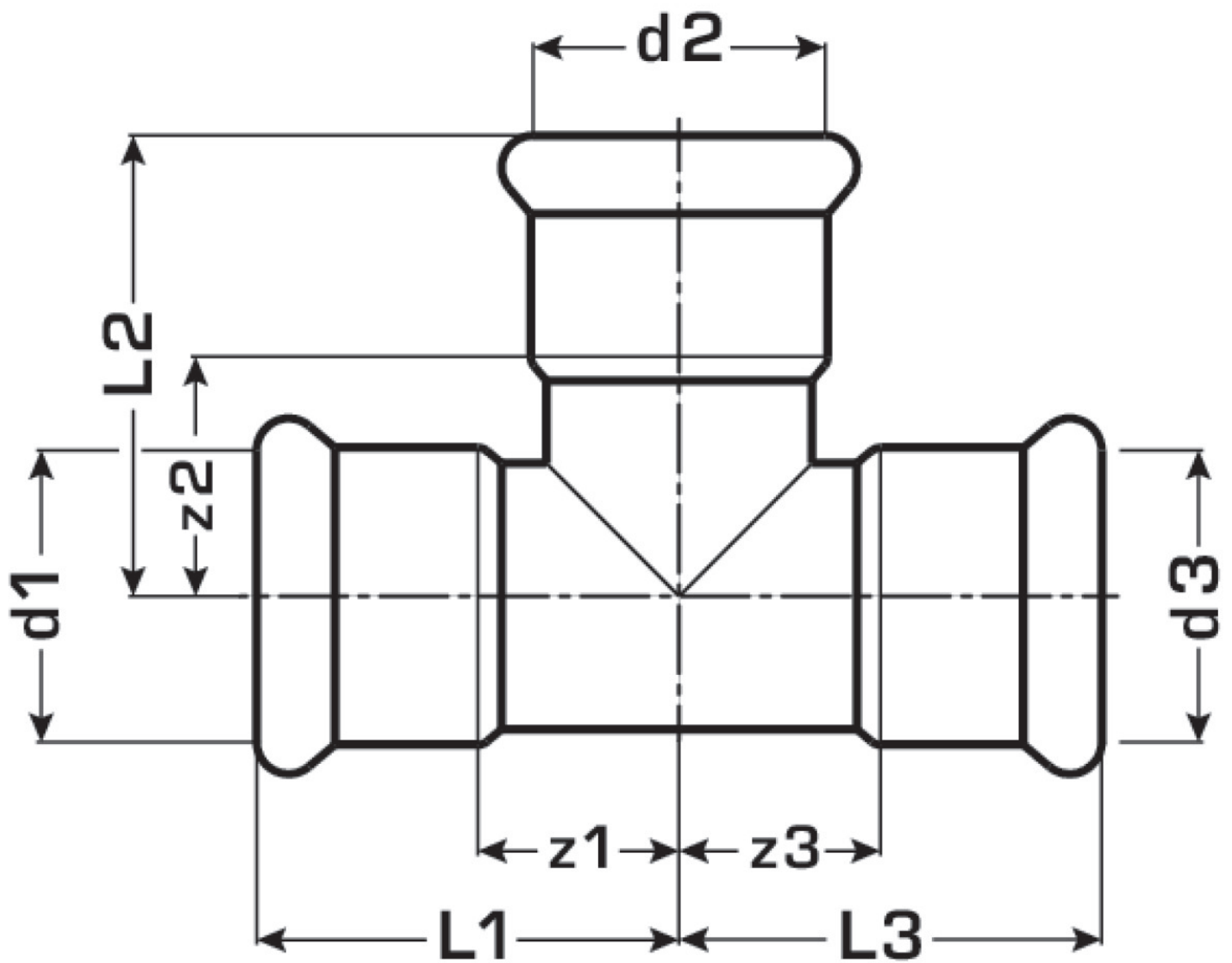
|               |            |
|---------------|------------|
| port 1        | Pressmuffe |
| port 2        | Pressmuffe |
| port 3        | Pressmuffe |
| execution     | T-Stück    |
| press contour | M          |

## Technical properties

|                                    |        |
|------------------------------------|--------|
| maximum working pressure at 20 ° C | 16 bar |
|------------------------------------|--------|

## Product information

|                     |                       |
|---------------------|-----------------------|
| VPE1                | 2 SA1                 |
| weight              | 1,256 KGM             |
| text                | C-Steel press-tee     |
| INTRNR              | 73079980              |
| main material group | STEELFIX              |
| material group      | C-STAHL pressfittings |
| code                | CP440                 |



| Art. No  | label    | d1 mm | d2 mm | d3 mm | L1 mm | L2 mm | L3 mm | z1 mm | z2 mm | z3 mm |
|----------|----------|-------|-------|-------|-------|-------|-------|-------|-------|-------|
| 54630KDP | 89/22/89 | 88.9  | 22    | 88.9  | 130   | 76    | 130   | 67    | 55    | 67    |