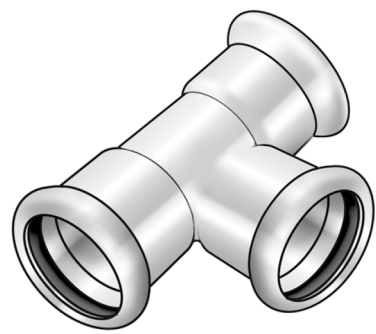


STEEL FIX EDELSTAHL

NP440 Stainless steel press-tee 28/28/28

53630EEE

Areas of application



Press-fit tee equal or reduced made of stainless steel 1.4404, incl. EPDM sealing components, d15-54 "leak before pressed"

Press contour: M

Approvals:



Specifications

Article information

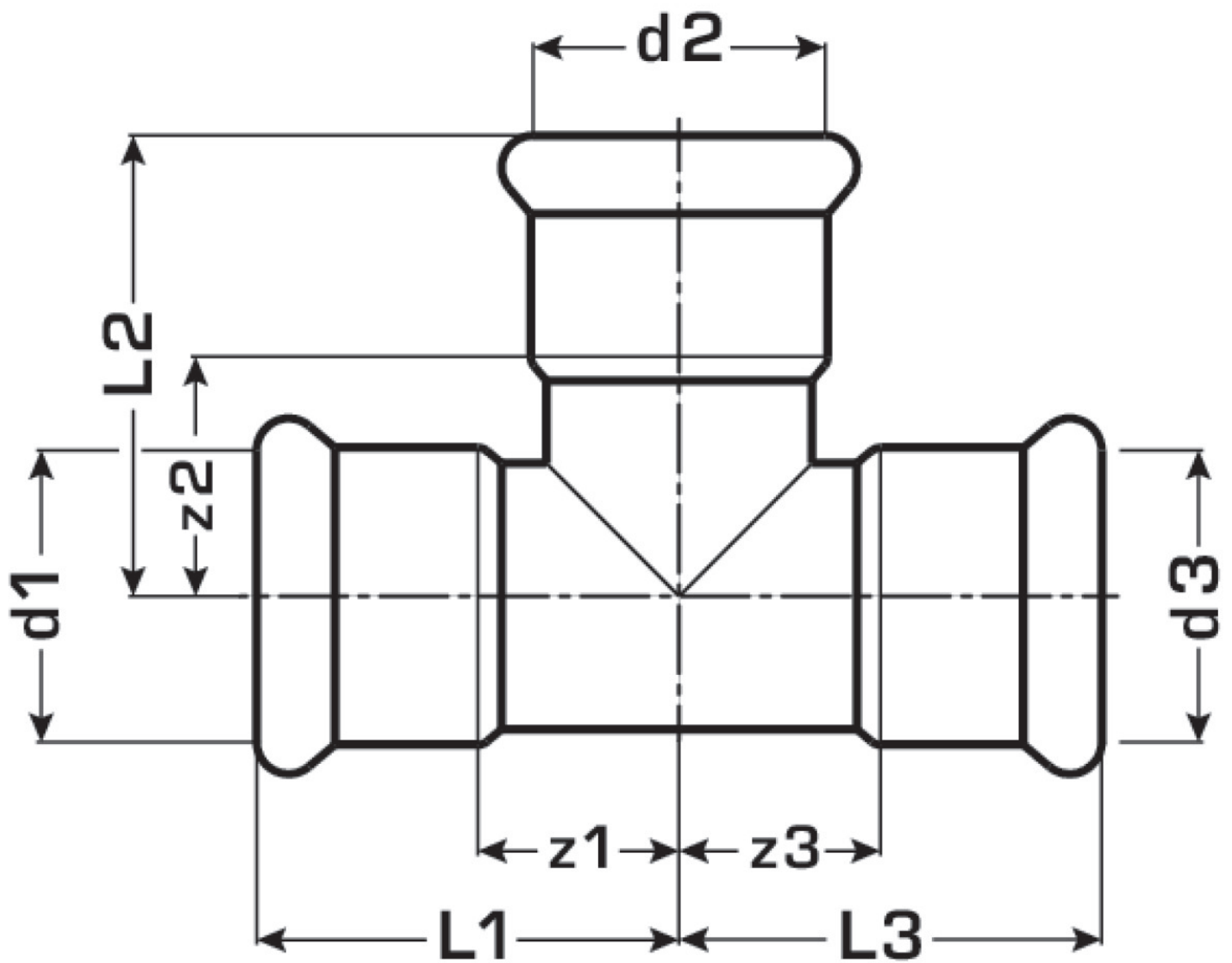
| | |
|---------------|------------|
| port 1 | Pressmuffe |
| port 2 | Pressmuffe |
| port 3 | Pressmuffe |
| execution | T-Stück |
| press contour | M |

Technical properties

| | |
|------------------------------------|--------|
| maximum working pressure at 20 ° C | 16 bar |
|------------------------------------|--------|

Product information

| | |
|---------------------|---------------------------|
| VPE1 | 5 SA1 |
| VPE2 | 30 KT1 |
| VPE3 | 750 DDP |
| weight | 0,15 KGM |
| text | Stainless steel press-tee |
| INTRNR | 73072980 |
| main material group | STEELFIX |
| material group | EDELSTAHL pressfittings |
| code | NP440 |



| Art. No | label | d1 mm | d2 mm | d3 mm | L1 mm | L2 mm | L3 mm | z1 mm | z2 mm | z3 mm |
|----------|----------|-------|-------|-------|-------|-------|-------|-------|-------|-------|
| 53630EEE | 28/28/28 | 28 | 28 | 28 | 45 | 49 | 45 | 22 | 26 | 22 |