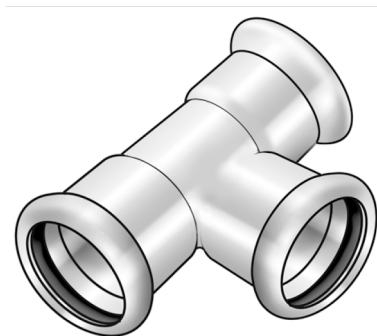


# STEEL FIX EDELSTAHL

NP440 Stainless steel press-tee 35/15/35

53630FBF

## Areas of application



Press-fit tee equal or reduced made of stainless steel 1.4404, incl. EPDM sealing components, d15-54 "leak before pressed"

Press contour: M

## Approvals:



# Specifications

## Article information

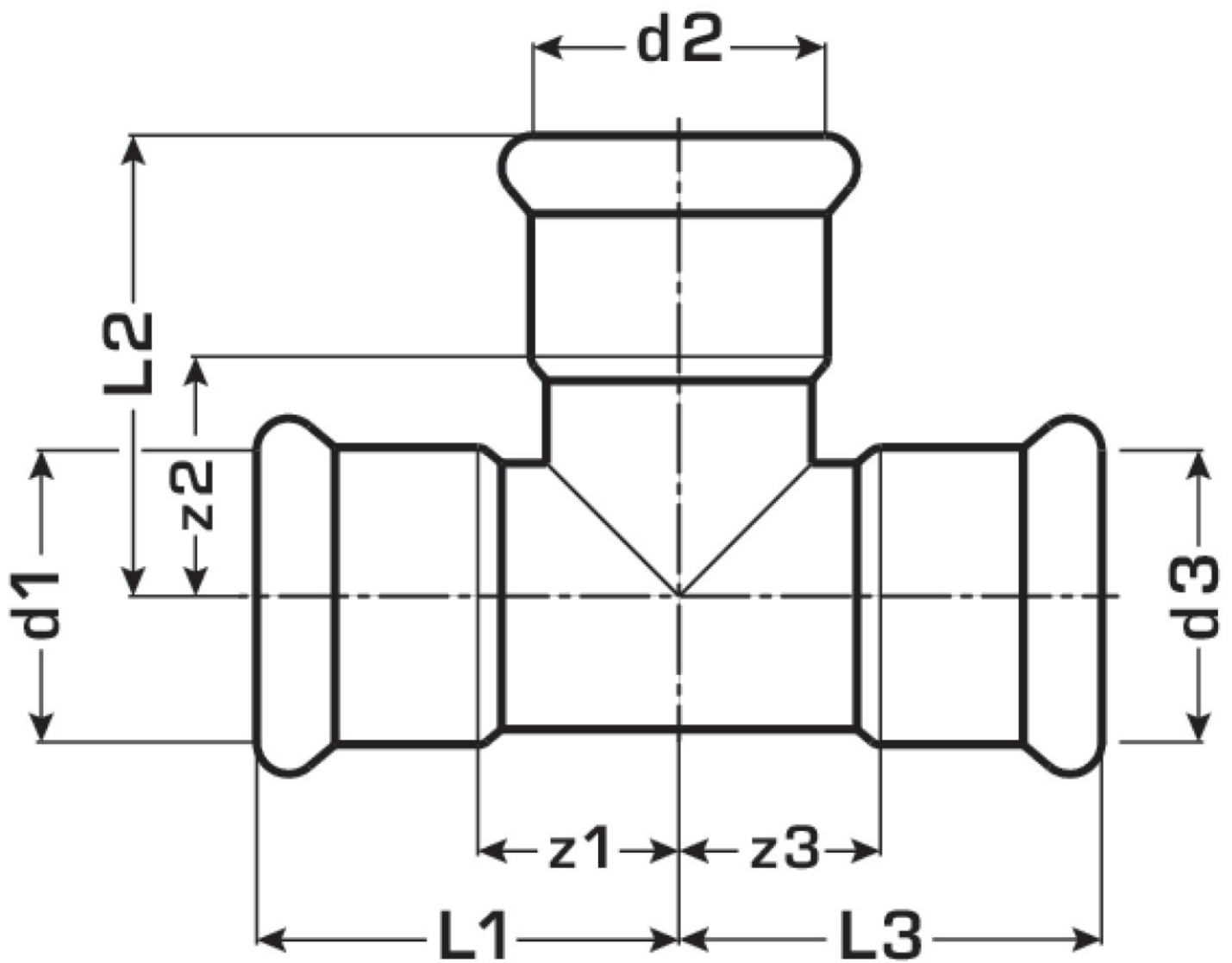
|               |            |
|---------------|------------|
| port 1        | Pressmuffe |
| port 2        | Pressmuffe |
| port 3        | Pressmuffe |
| execution     | T-Stück    |
| press contour | M          |

## Technical properties

|                                    |        |
|------------------------------------|--------|
| maximum working pressure at 20 ° C | 16 bar |
|------------------------------------|--------|

## Product information

|                     |                           |
|---------------------|---------------------------|
| VPE1                | 5 SA1                     |
| VPE2                | 20 KT1                    |
| VPE3                | 500 DDP                   |
| weight              | 0,172 KGM                 |
| text                | Stainless steel press-tee |
| INTRNR              | 73072980                  |
| main material group | STEELFIX                  |
| material group      | EDELSTAHL pressfittings   |
| code                | NP440                     |



| Art. No  | label    | d1 mm | d2 mm | d3 mm | L1 mm | L2 mm | L3 mm | z1 mm | z2 mm | z3 mm |
|----------|----------|-------|-------|-------|-------|-------|-------|-------|-------|-------|
| 53630FBF | 35/15/35 | 35    | 15    | 35    | 51    | 49    | 51    | 25    | 29    | 25    |