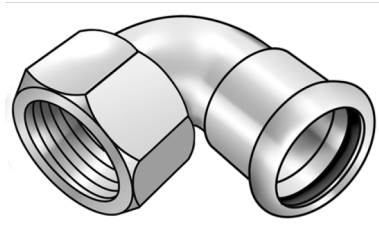


STEEL FIX EDELSTAHL

NP467 STEELFIX stainless steel press-fit elbow adaptor 90° with female thread 22x1/2"

53716D02

Areas of application



Press-elbow adaptor 90° with female thread made of stainless steel 1.4404, incl. EPDM sealing components, d15-54 "leak before pressed"

Press contour: M

Approvals:



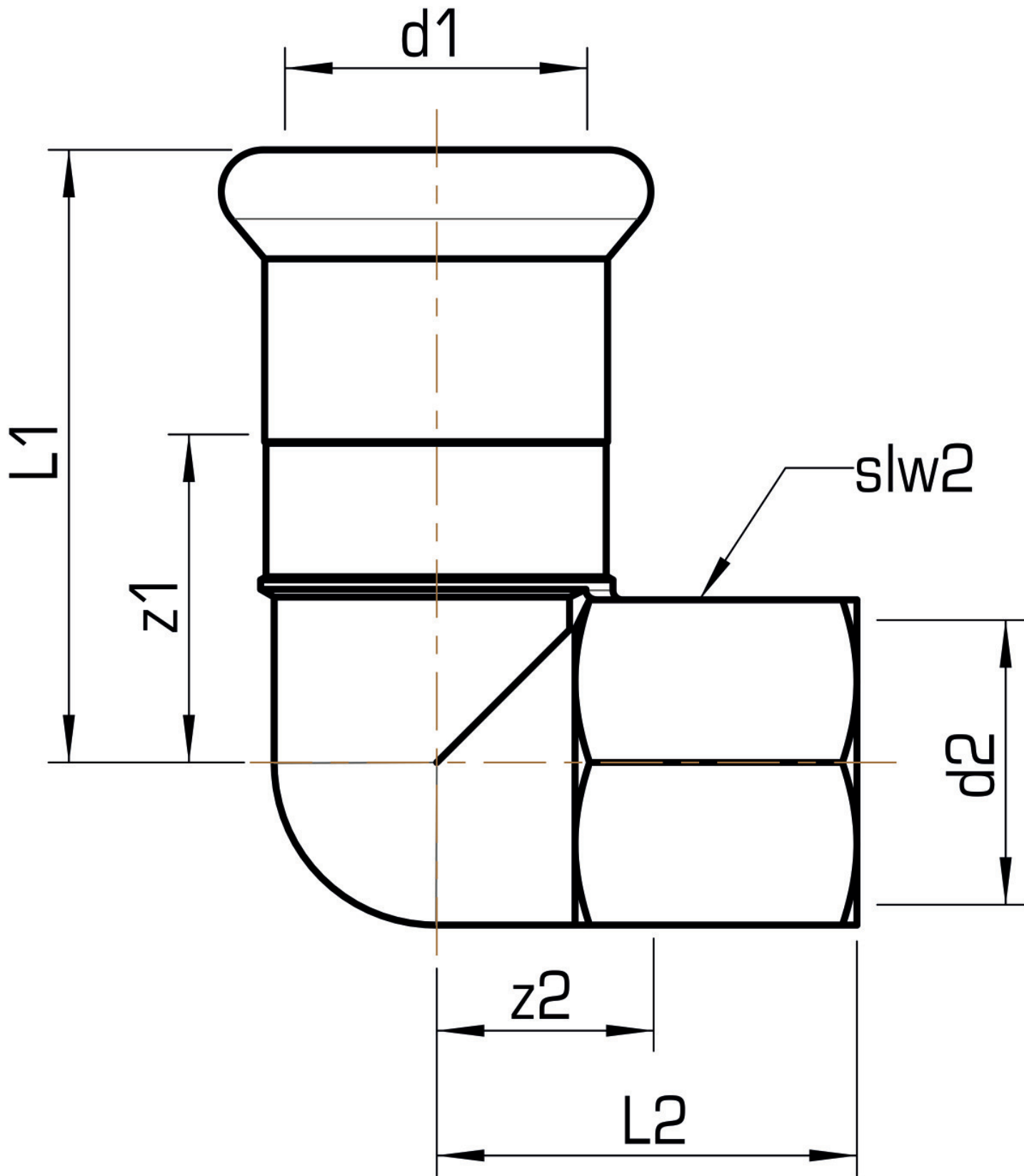
Specifications

Article information

| | |
|---------------|---|
| port 1 | Pressmuffe |
| port 2 | Innengewinde zylindrisch BSPT-Rp (ISO 7-1 / EN 10226-1) |
| execution | 1-part |
| design | Bogen |
| angle | 90 ° |
| press contour | M |

Product information

| | |
|----------------|---|
| VPE1 | 10,00 SA1 |
| VPE2 | 50,00 KT1 |
| VPE3 | 1250,00 DDP |
| weight | 0,287 KGM |
| text | STEELFIX stainless steel press-fit elbow adaptor 90° with female thread |
| INTRNR | 73072980 |
| material group | EDELSTAHL pressfittings |
| code | NP467 |



| Art. No | label | d2 Inches | d1 mm | L1 mm | L2 mm | z1 mm | z2 mm | slw2 mm |
|----------|---------|--------------|-------|-------|-------|-------|-------|---------|
| 53716D02 | 22x1/2" | 1/2" (15) | 22 | 45 | 31 | 24 | 16 | 24 |



KE KELIT GmbH

A 4020 Linz, Ignaz-Mayer-Straße 17, Austria, Europe

PHONE +43 (0) 50 779 **E-MAIL** office@kekelit.com

www.kekelit.com