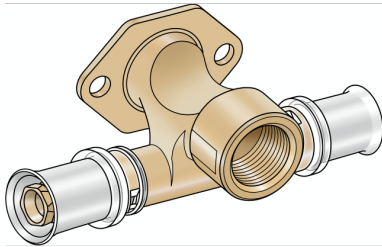


KELOX

KMW447D KELOX-ULTRAX-W tee with branch female with fastening plate 20x1/2"

71457B2B

Areas of application



?Zeta value-optimised press-fit tee with female thread branch and fastening plate, groove for easier pipe routing where there is limited space, made from dezincification-resistant, (DZR) brass, including support sleeves with O-rings and stainless steel press-fit sleeves "leak before pressed", audible leakage signal at air-pressure testing

DO NOT screw in threaded pipes and cast iron fittings!

Approvals:



Specifications

Article information

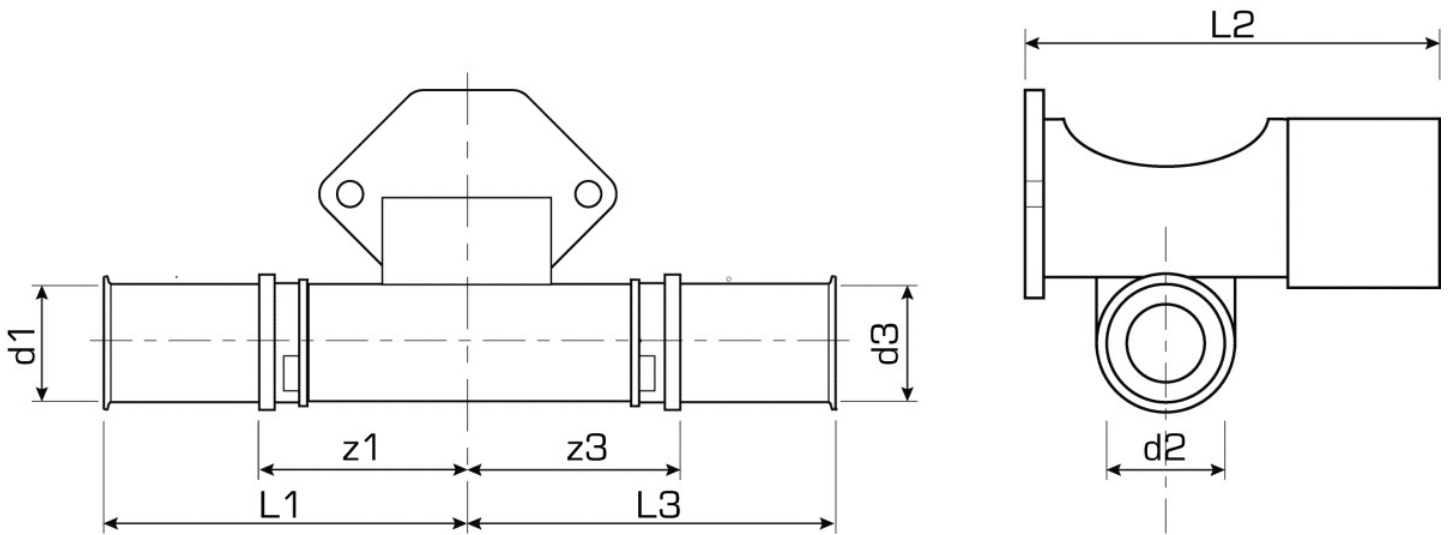
port 1	Pressmuffe
port 2	Innengewinde zylindrisch (BSPP)
port 3	Pressmuffe
execution	T-Stück
press contour	U

Technical properties

maximum working pressure at 20 ° C	16 bar
------------------------------------	--------

Product information

VPE1	10,00 SA1
VPE2	30,00 KT1
VPE3	1800,00 PAL
weight	0,231 KGM
text	KELOX-ULTRAX-W tee with branch female with fastening plate
INTRNR	74122000
main material group	KELOX
code	KMW447D



Art. No	label	d2	d1 mm	d3 mm
71457B2B	20x1/2"	1/2" (15)	20	20