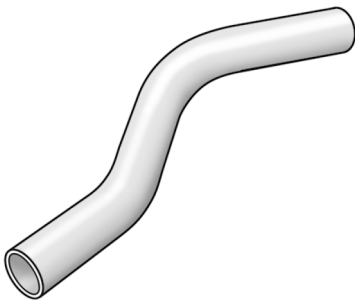


# STEEL FIX C-STAHl

CP427 C-Steel curved pipe male/male 15

54623BB0

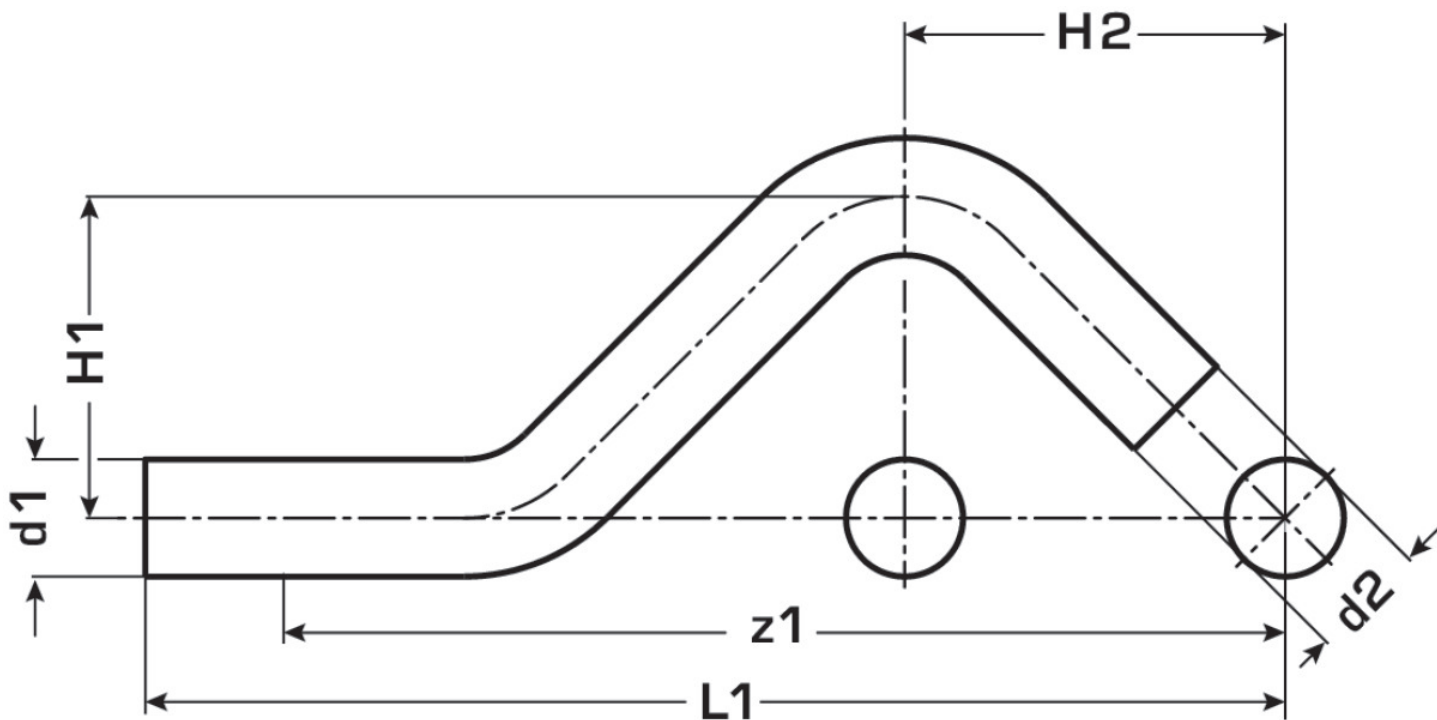
## Areas of application



Curved pipe for parallel lines m/m made of C-steel coated with a zinc layer

# Specifications

Product information	
VPE1	10 SA1
VPE2	70 KT1
VPE3	1750 DDP
weight	0,078 KGM
text	C-Steel curved pipe male/male
INTRNR	73079980
main material group	STEELFIX
material group	C-STAHL pressfittings
code	CP427



Art. No	label	d1 mm	d2 mm	L1 mm	z1 mm
54623BB0	15	15	15	158	138