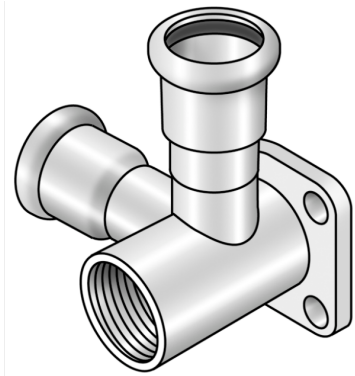


STEEL FIX EDELSTAHL

NP475 STEELFIX stainless steel press-fit connection tee with female thread 18x1/2"

53752C2C

Areas of application



Press-fitting connection tee, female, made of stainless steel 1.4404, incl. EPDM sealing components, "leak before pressed"

Press contour: M

Approvals:



Specifications

Article information

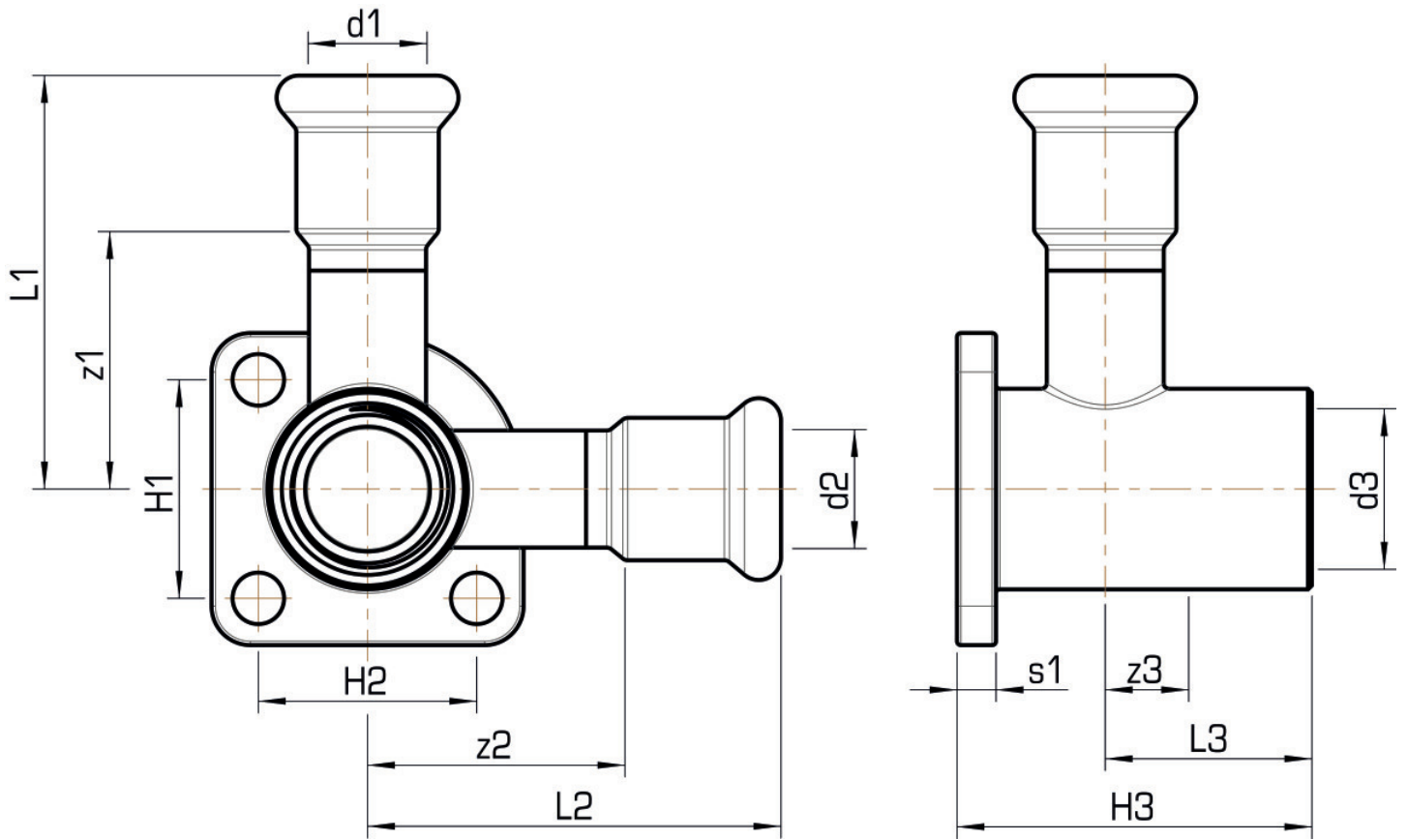
| | |
|---------------|--------------------------|
| port 1 | Pressmuffe |
| design | Durchgängig rechtwinklig |
| press contour | M |

Technical properties

| | |
|------------------------------------|--------|
| maximum working pressure at 20 ° C | 16 bar |
|------------------------------------|--------|

Product information

| | |
|----------------|--|
| VPE1 | 10,00 SA1 |
| VPE2 | 30,00 KT1 |
| weight | 0,170 KGM |
| text | STEELFIX stainless steel press-fit connection tee with female thread |
| INTRNR | 73072980 |
| material group | EDELSTAHL pressfittings |
| code | NP475 |



| Art. No | label | d1 mm | L1 mm | L2 mm | L3 mm | z1 mm | z2 mm | z3 mm |
|----------|---------|-------|-------|-------|-------|-------|-------|-------|
| 53752C2C | 18x1/2" | 18 | 53 | 53 | 26,5 | 33 | 33 | 11 |