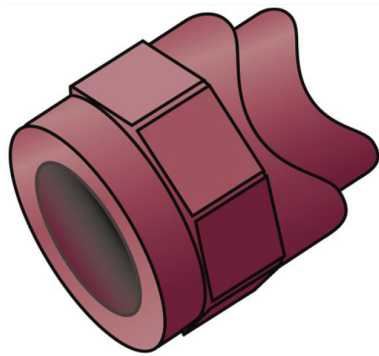


KETRIX

TRI47 KETRIX saddle fitting 63-125x25

55118KE0

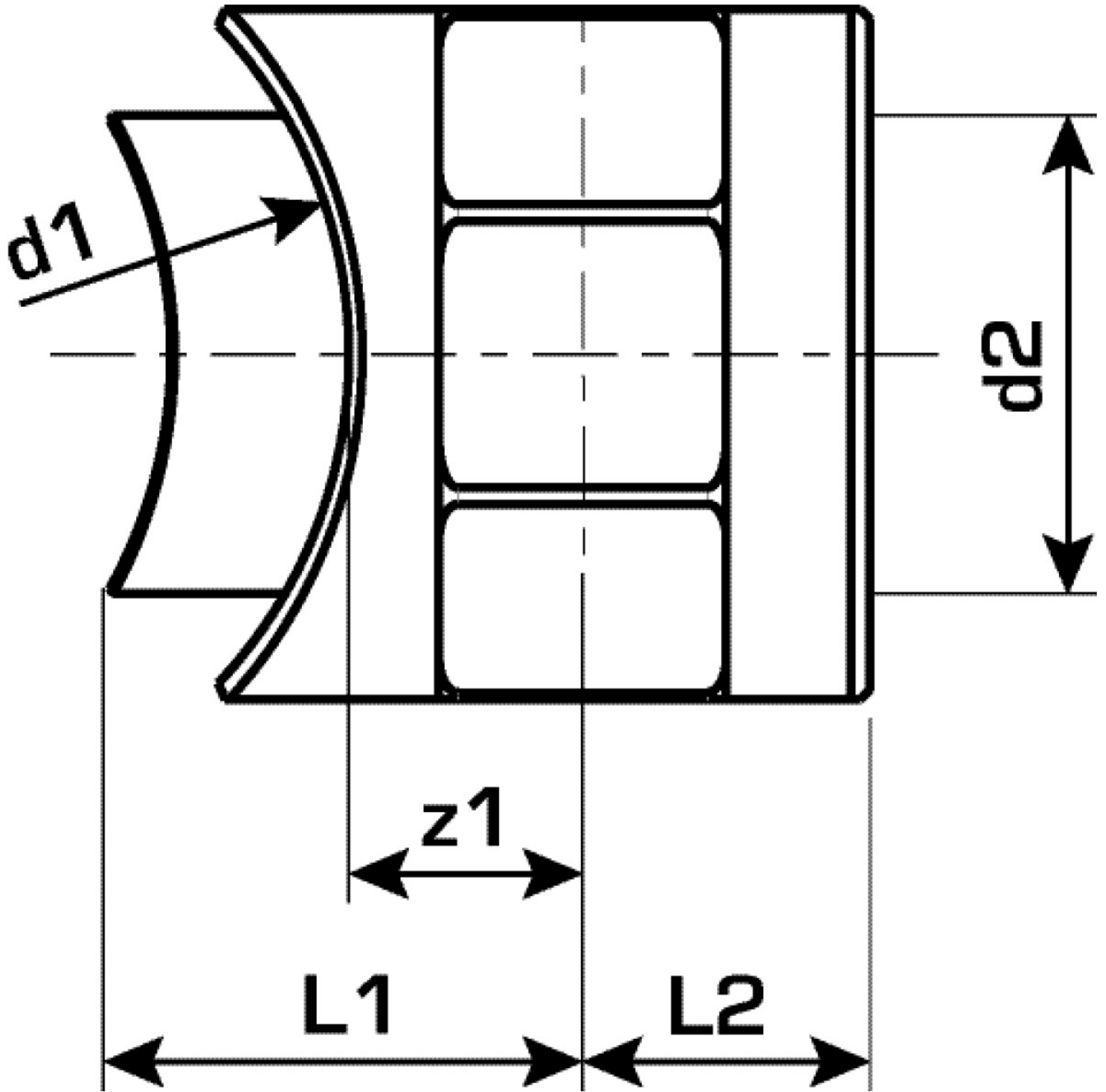
Areas of application



KETRIX polyfusion weld fitting for connecting POB pipes to fittings made of the same material without narrowing the cross section. For welding directly to pipelines that have already been installed; the welding is carried out with a WZ124 saddle welding tool

Specifications

| Product information | |
|---------------------|-------------------------|
| VPE1 | 5,00 SA1 |
| VPE2 | 100,00 KT1 |
| VPE3 | 600,00 KT2 |
| VPE4 | 9600,00 PAL |
| weight | 0,021 KGM |
| text | KETRIX saddle fitting |
| INTRNR | 39174000 |
| main material group | KETRIX |
| material group | KETRIX plastic fittings |
| code | TRI47 |



| Art. No | label | d1 mm | L2 mm | z1 mm |
|----------|-----------|-------|-------|-------|
| 55118KE0 | 63-125x25 | 25 | 15 | 13 |