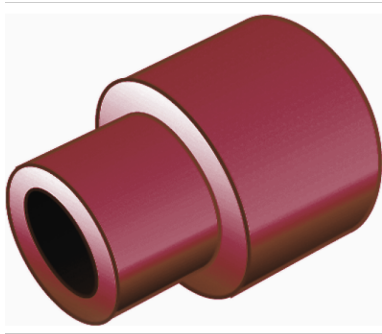


# KETRIX

## TRI61 KETRIX weld plug 25

55121E00

### Areas of application



KETRIX polyfusion weld fitting for connecting POB pipes to fittings made of the same material without narrowing the cross section

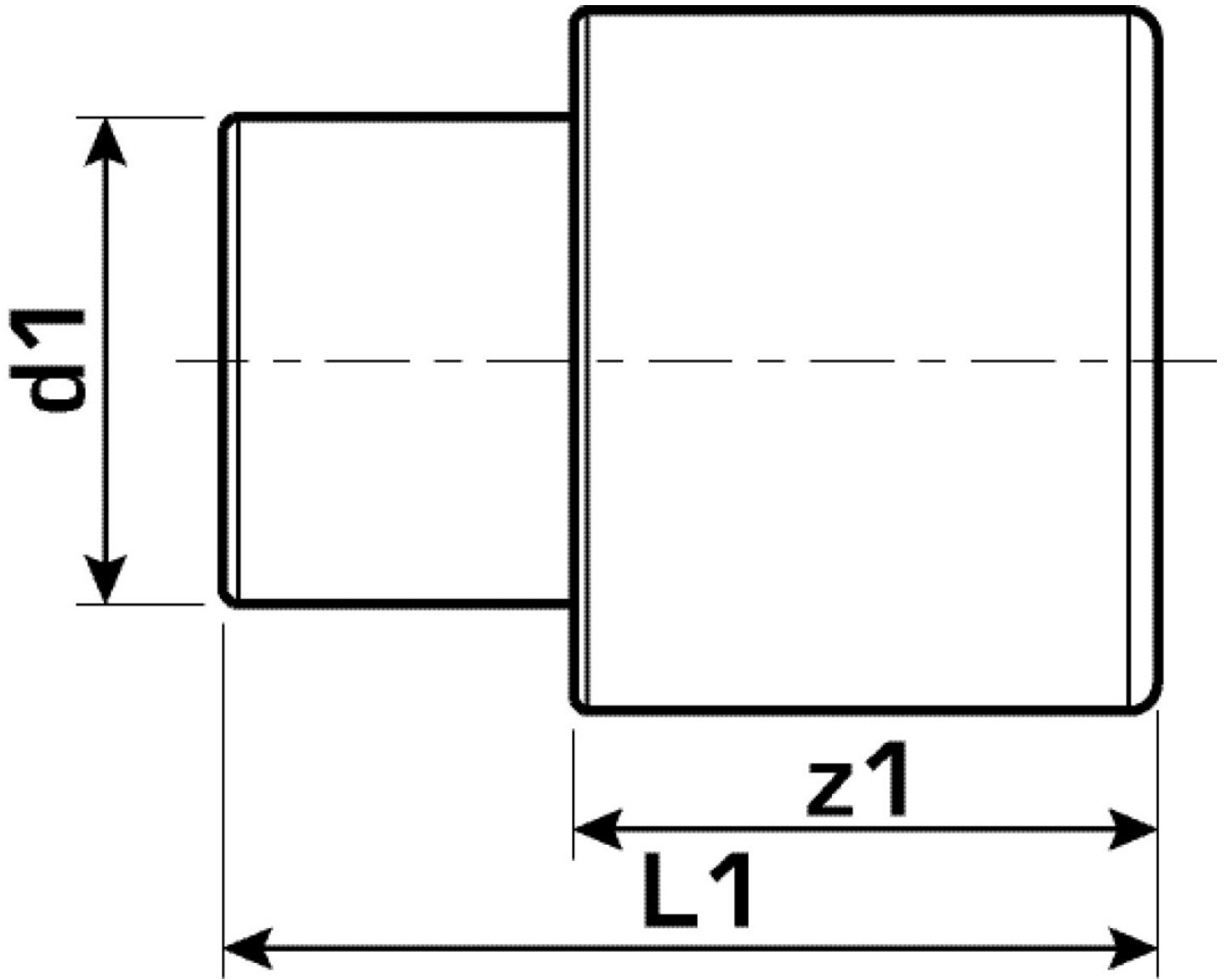
# Specifications

## Article information

**port 1** Plastic welding socket

## Product information

<b>VPE1</b>	10,00 SA1
<b>VPE2</b>	150,00 KT1
<b>VPE3</b>	900,00 KT2
<b>VPE4</b>	14400,00 PAL
<b>weight</b>	0,026 KGM
<b>text</b>	KETRIX weld plug
<b>INTRNR</b>	39174000
<b>main material group</b>	KETRIX
<b>material group</b>	KETRIX plastic fittings
<b>code</b>	TRI61



Art. No	label	d1 mm	L1 mm	z1 mm
55121E00	25	25	47	29