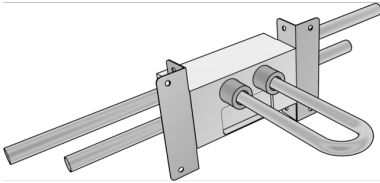


# KELOX

## BF602TB KELOX dry construction radiator tee box metal bracket 20x20

9009215

### Areas of application



Insulating wall block for valve radiators; to be installed in dry construction, with metal bracket, optimised for installation in drywall construction, incl. inlaid KELOX multilayer pipes for installation in wall area on both sides between the feed line and return line, joined non-porous metallised copper pipes d15mm for later connection of the radiators, feed line at top

ATTENTION: Follow the installation instructions of the screw fitting manufacturers and if necessary use support sleeves for copper connections

Installation dimensions: W: 140mm, H: 80mm, D: 70mm



**KE KELIT GmbH**

A 4020 Linz, Ignaz-Mayer-Straße 17, Austria, Europe

**PHONE** +43 (0) 50 779 **E-MAIL** [office@kekelit.com](mailto:office@kekelit.com)

[www.kekelit.com](http://www.kekelit.com)

# Specifications

Product information	
VPE1	1,00 SA1
VPE2	10,00 KT1
weight	0,540 KGM
text	KELOX dry construction radiator tee box metal bracket
INTRNR	39174000
main material group	KELOX
material group	KELOX accessories
code	BF602TB

Art. No	label
9009215	20x20