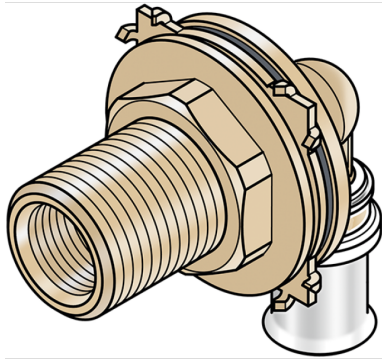


# KELOX

KMW483 KELOX-ULTRAX-W wall duct 90° with female thread 16x1/2 59mm

71456B26

## Areas of application



?Zeta value-optimised press-fit wall duct with female thread for drywall construction, made from dezincification-resistant (DZR) brass, including support sleeves with O-rings and stainless steel press-fit sleeves "leak before pressed", audible leakage signal at air-pressure testing  
DO NOT screw in threaded pipes and cast iron fittings!

## Approvals:



# Specifications

## Article information

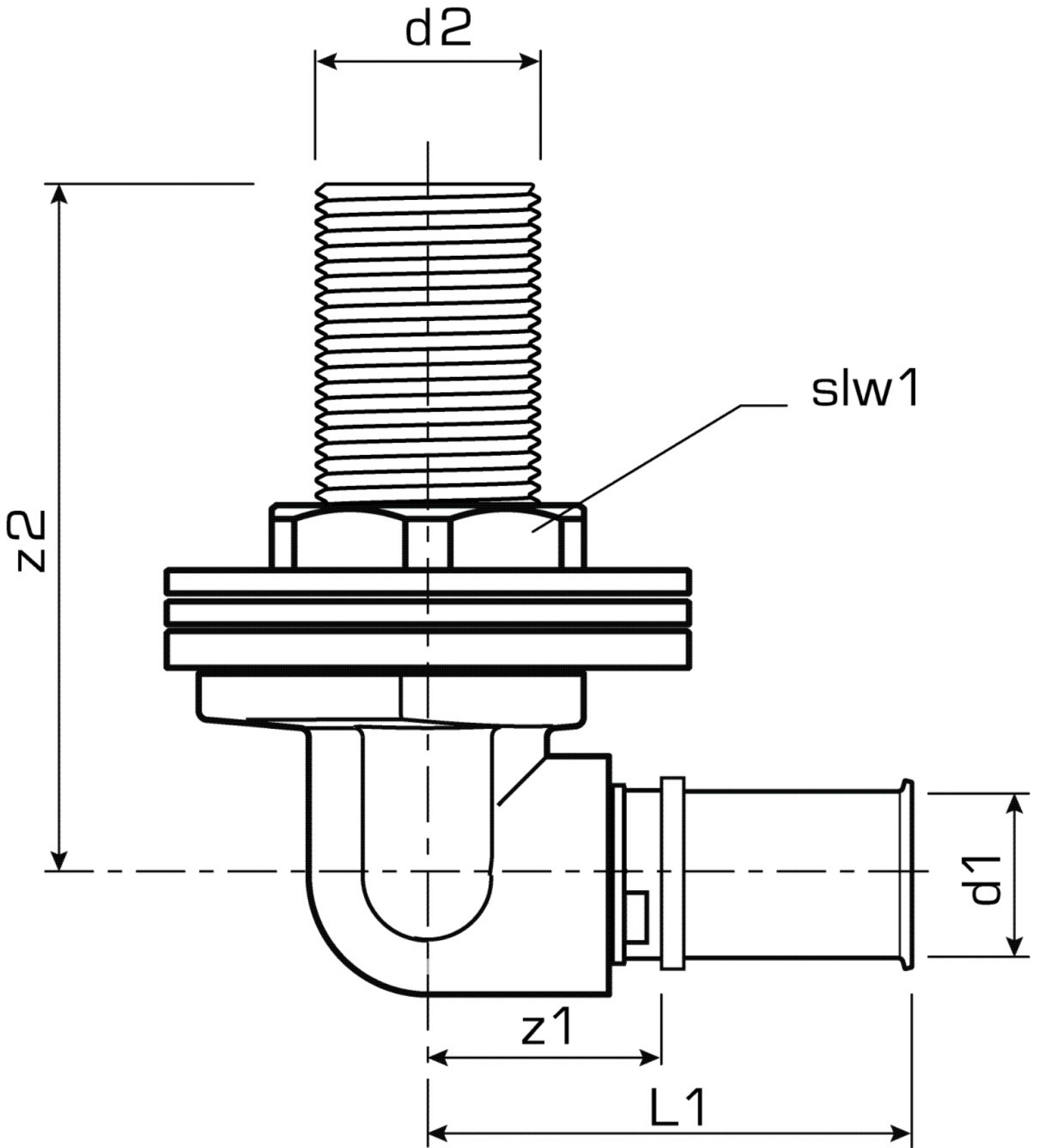
port 1	Pressmuffe
port 2	Außengewinde zylindrisch BSPP (ISO 228-1)
design	Winkel
angle	90 °
press contour	U

## Technical properties

maximum working pressure at 20 ° C	16 bar
------------------------------------	--------

## Product information

VPE1	2,00 SA1
VPE2	10,00 KT1
VPE3	1600,00 PAL
weight	0,395 KGM
text	KELOX-ULTRAX-W wall duct 90° with female thread
INTRNR	74122000
main material group	KELOX
code	KMW483



Art. No	label	d2	d1 mm	L2 mm	z1 mm	z2 mm
71456B26	16x1/2 59mm	1/2" (15)	16	59	25	22



**KE KELIT GmbH**

A 4020 Linz, Ignaz-Mayer-Straße 17, Austria, Europe

**PHONE** +43 (0) 50 779 **E-MAIL** [office@kekelit.com](mailto:office@kekelit.com)

[www.kekelit.com](http://www.kekelit.com)