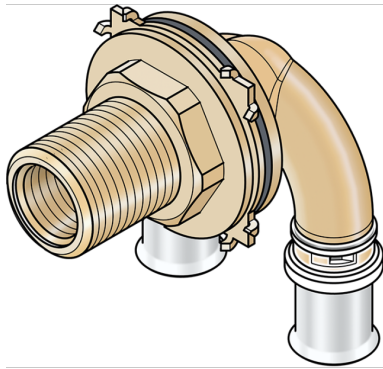


KELOX

KMW483D KELOX-ULTRAX-W double U wall duct 90° with female thread 16x1/2 48mm

71456B2B

Areas of application



?Zeta value-optimised double U press-fit wall duct with female thread for drywall construction, made from dezincification-resistant (DZR) brass, including support sleeves with O-rings and stainless steel press-fit sleeves "leak before pressed", audible leakage signal at air-pressure testing
DO NOT screw in threaded pipes and cast iron fittings!

Approvals:



Specifications

Article information

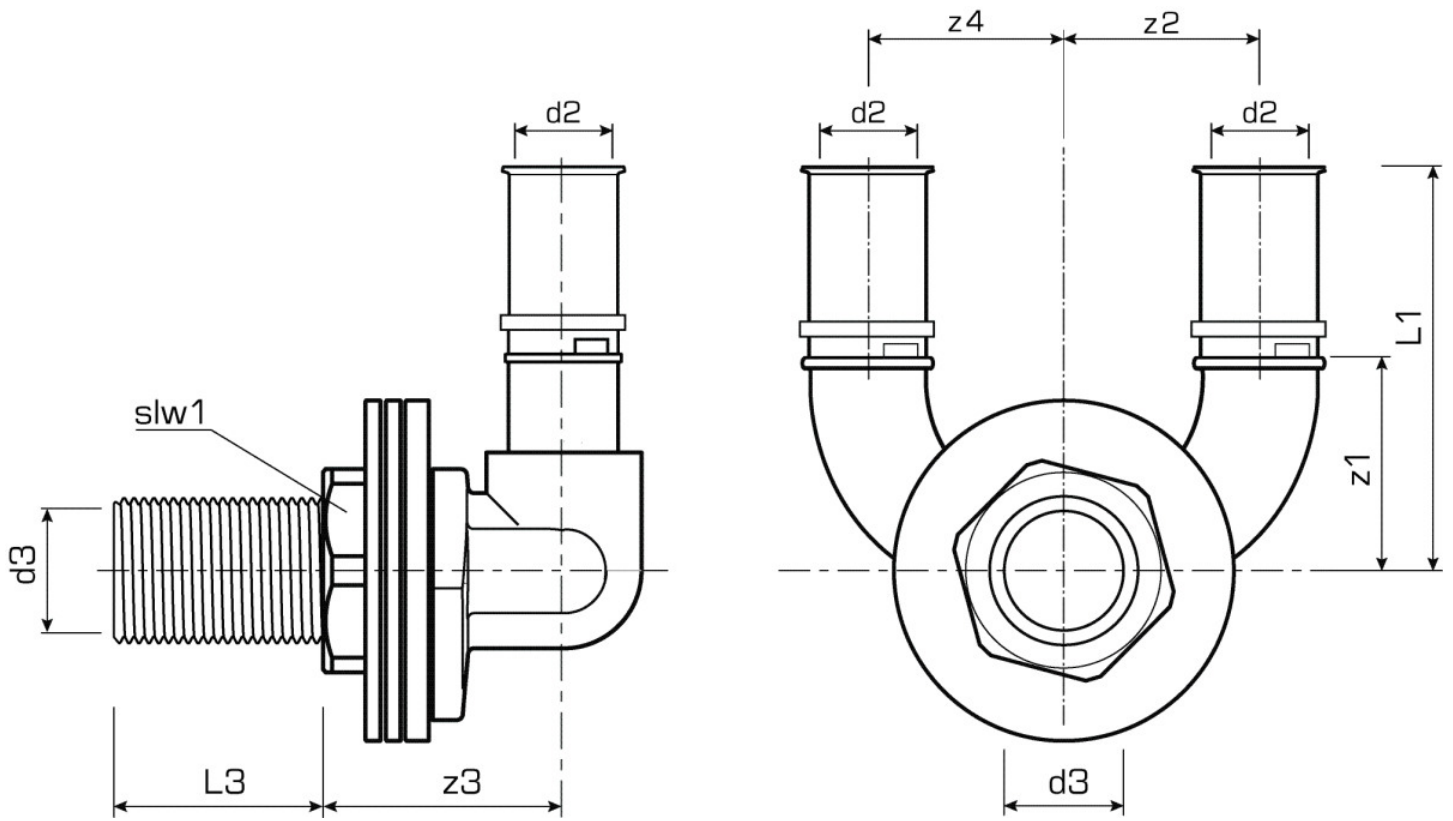
port 1	Pressmuffe
port 2	Innengewinde zylindrisch (BSPP)
port 3	Pressmuffe
execution	T-Stück
press contour	U

Technical properties

maximum working pressure at 20 ° C	16 bar
------------------------------------	--------

Product information

VPE1	2,00 SA1
VPE2	10,00 KT1
VPE3	1600,00 PAL
weight	0,335 KGM
text	KELOX-ULTRAX-W double U wall duct 90° with female thread
INTRNR	74122000
main material group	KELOX
code	KMW483D



Art. No	label	d2	d1 mm	d3 mm	L2 mm	z1 mm	z2 mm	z3 mm
71456B2B	16x1/2 48mm	1/2" (15)	16	16	48	33	33	33