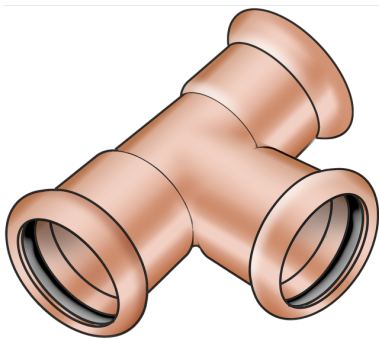


COPPER FIX

COF440 COPPERFIX copper press-tee 42/35/42

52630GFG

Areas of application



Press-tee equal or reduced made of copper, incl. EPDM sealing components, "leak before pressed"

Press contour: M

Approvals:



Specifications

Article information

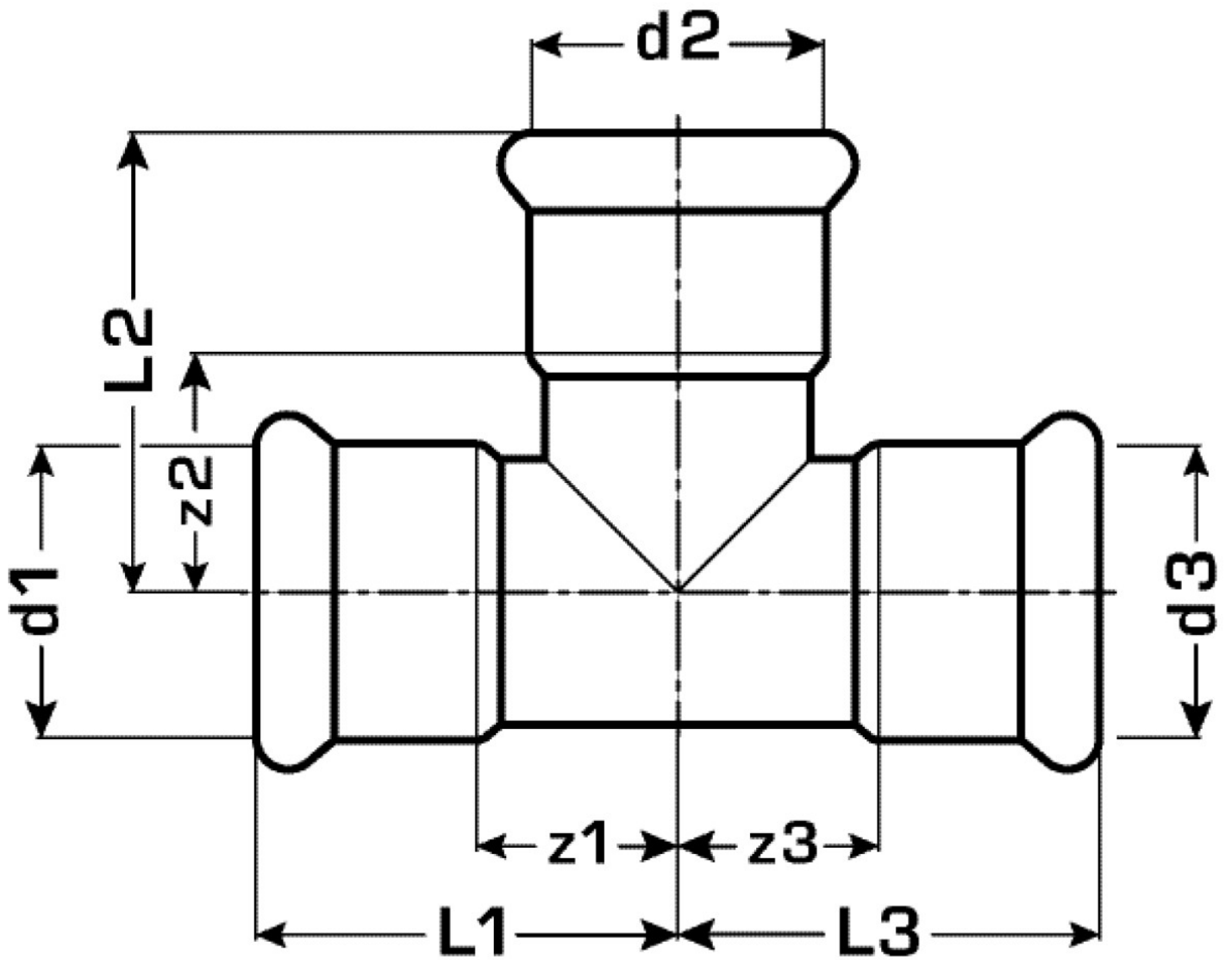
| | |
|---------------|------------|
| port 1 | Pressmuffe |
| port 2 | Pressmuffe |
| port 3 | Pressmuffe |
| execution | T-Stück |
| angle | 90 ° |
| press contour | M |

Technical properties

| | |
|------------------------------------|--------|
| maximum working pressure at 20 ° C | 16 bar |
|------------------------------------|--------|

Product information

| | |
|---------------------|----------------------------|
| VPE1 | 1,00 SA1 |
| VPE2 | 8,00 KT1 |
| weight | 0,361 KGM |
| text | COPPERFIX copper press-tee |
| INTRNR | 74122000 |
| main material group | COPPERFIX |
| material group | KUPFER pressfittings |
| code | COF440 |



| Art. No | label | d1 mm | d2 mm | d3 mm | L1 mm | L2 mm | L3 mm | z1 mm | z2 mm | z3 mm |
|----------|----------|-------|-------|-------|-------|-------|-------|-------|-------|-------|
| 52630GFC | 42/35/42 | 42 | 35 | 42 | 56 | 50 | 56 | 26 | 24 | 26 |