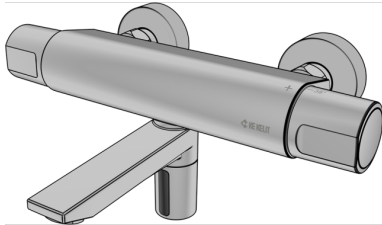


# KETRON

## KET160 KETRON wall-mounted washbasin tap, surface-mounted 200mm

21801600

### Areas of application



Contactless, electronically controlled surface-mounted wall-mounted washbasin tap, high pressure with infrared sensor and thermostat mixer. With temperature barrier max. 43°C, can be converted to max. 38°C. Thermal flushing can be carried out by unlocking the thermostat. Surface chrome-plated, operating pressure: 0.3 - 10 bar - max. 80°C. Inside micrometer 150mm, 3/4" connection with flat seal, with S connections G1/2" male thread on G3/4" male thread, projection 200mm. Battery operated. The length of the projection is indicated.

# Specifications

## Product information

<b>VPE1</b>	1,00 KT1
<b>weight</b>	4,300 KGM
<b>text</b>	KETRON wall-mounted washbasin tap, surface-mounted
<b>INTRNR</b>	84818011
<b>code</b>	KET160

<b>Art. No</b>	<b>label</b>
21801600	200mm