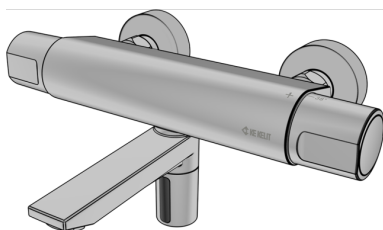


# KETRON

KET165 KETRON wall-mounted washbasin tap,  
surface-mounted communication box 200mm  
commbox

21801650

## Areas of application



Contactless, electronically controlled surface-mounted wall-mounted washbasin tap, high pressure with infrared sensor, hygiene flushing programme and thermostatic mixer. With temperature barrier max. 43°C, can be converted to max. 38°C. Thermal flushing can be carried out by unlocking the thermostat. Surface chrome-plated, operating pressure: 0.3 - 10 bar - max. 80°C. Inside micrometer 150mm, 3/4" connection with flat seal, with S connections G1/2" male thread to G3/4" male thread. Battery operated. With KET950 communication box for app compatibility, demand-driven hygiene flushing, protocol function for recording usage and hygiene flushing, simplified configuration. The length of the projection is indicated.



**KE KELIT GmbH**

A 4020 Linz, Ignaz-Mayer-Straße 17, Austria, Europe

**PHONE** +43 (0) 50 779 **E-MAIL** [office@kekelit.com](mailto:office@kekelit.com)

[www.kekelit.com](http://www.kekelit.com)

# Specifications

## Product information

<b>VPE1</b>	1,00 KT1
<b>weight</b>	4,300 KGM
<b>text</b>	KETRON wall-mounted washbasin tap, surface-mounted communication box
<b>INTRNR</b>	84818011
<b>code</b>	KET165

<b>Art. No</b>	<b>label</b>
21801650	200mm commbox