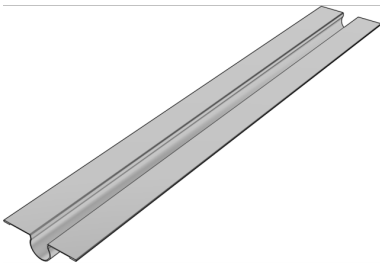


# KELOX<sub>FB</sub>

KM665 KELOX dry aluminium heat conduction plate 1000x120x0.4mm

6103700

## Areas of application



Omega-shaped aluminium heat conduction plate for optimum heat conduction and distribution of the heat output from the pipe to the floor surface. You press the omega-shaped aluminium heat conduction plates into the longitudinal slit in the dry construction floor structure, which holds the KELOX-ULTRAX FB pipe d16 mm in the aluminium heat conduction plate

Width of slit: 18mm

Depth of slit: at least 18mm

# Specifications

Product information	
VPE1	1,00 STK
VPE2	64,00 KT1
weight	0,160 KGM
text	KELOX dry aluminium heat conduction plate
INTRNR	76061191
code	KM665

Art. No	label
6103700	1000x120x0.4mm